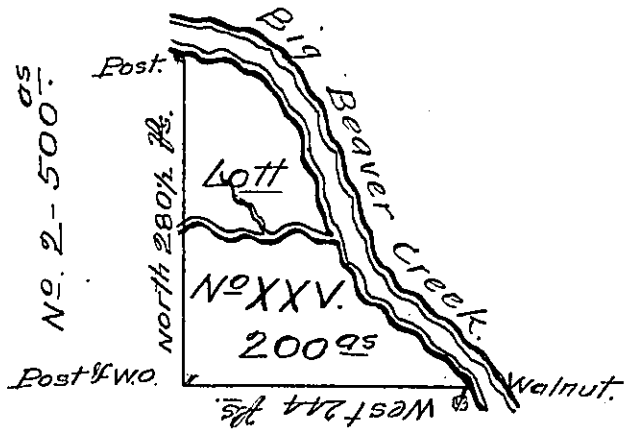


Courses down Big Beaver Creek.



- S. 53 E. 35 Perches.
- S. 33 E. 47 P.
- S. 12 E. 96 P.
- S. 23 E. 63 P.
- S. 57 E. 130 P.

No. 21-200<sup>as</sup>

In Pursuance of an Act of General Assembly of the State of Pennsylvania passed the 24<sup>th</sup> day of February 1785 entitled "An Act for directing the mode of distributing the donation lands Promised the Troops of this Commonwealth, and by order of the Surveyor Gen<sup>l</sup>. with the approbation of the Hon<sup>ble</sup> the Supreme Executive Council, I have surveyed on the 7<sup>th</sup> day of October 1785, the above discribed Tract of Two Hundred Acres of land and allowance of six P Cent for Roads &c. No XXV. situate in district No 1, on the west side of the Allegany river, in the County of Westmoreland.

To John Lukens Esq<sup>r</sup> }  
 Surv<sup>r</sup>. General ~ }

William Alexander D.S.

IN TESTIMONY that the above is a copy of the original remaining on file in the Department of Internal Affairs of Pennsylvania, made conformably to an Act of Assembly approved the 16th day of February, 1833, I have hereunto set my Hand and caused the Seal of said Department to be affixed at Harrisburg, this twenty first day of July 1908.

*Henry Horvath*  
 Secretary of Internal Affairs.